



Creating and editing symbol libraries in Kidspiration

The Snacks are based on the full-length tutorials in the Recipes4Success series.
www.tech4learning.com/recipes

This sample is taken from the Snacks available in the Library of ProjectLearn.
www.tech4learning.com/ProjectLearn

Adding symbols to your diagram from Kidspiration's numerous symbol libraries is easy, but did you know that you can add symbols to these libraries as well? You can even add a symbol library of pictures you have taken with a digital camera!

Before you begin, go to the **Teacher** menu and choose *Enable Teacher Menu*.

Editing a symbol library

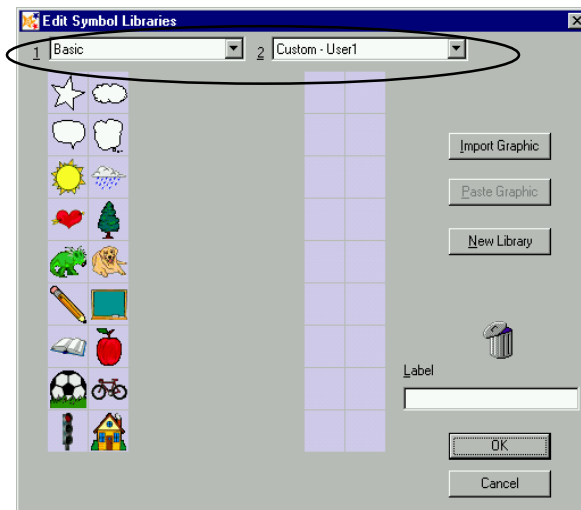
To edit a symbol library, go to the **Teacher** menu and choose *Edit Symbol Libraries*.



If you drag a symbol to the trash from an existing symbol library and click the OK

button, you will remove that symbol from Kidspiration.

If you don't want to delete existing symbols, be sure to drag symbols to the Custom - User1 library which already has open spaces for new symbols.



There are two symbol palettes at this window to work with. To choose the specific libraries you want to edit, use the 1 and 2 pull-down menus at the top of the Edit Symbol Library window.

Once you have selected the libraries you want to work with, you can drag symbols from one library to the other as long as there is an open space in the library. There is even a Custom - User1 library already set up for you to make your own symbol library.

If you want to remove a symbol, drag it to the trash can. You can then drag a new symbol into the open space.

When you are finished, click the **OK** button to save your changes.



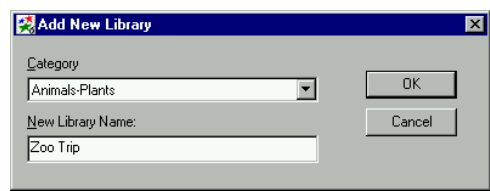


Creating and editing symbol libraries in Kidspiration

To make a new symbol library, go to the **Teacher** menu and choose *Edit Symbol Libraries*.

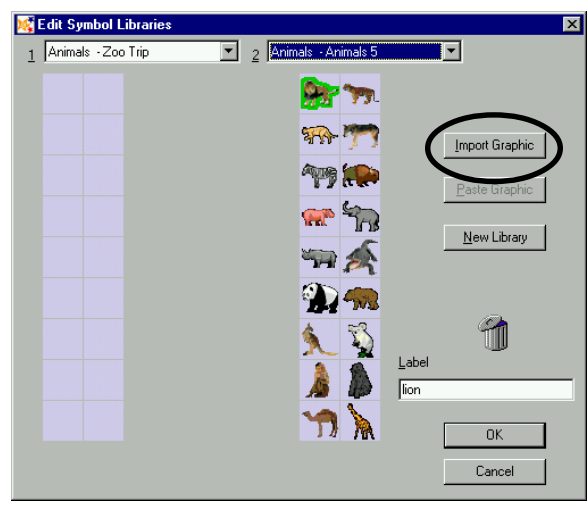
New Library At the Edit Symbol Libraries window, click the **New Library** button.

At the Add New Library window, type in a name for your library in the New Library Name field and choose a category from the category pull-down menu.



When you are finished, click the **OK** button.

Your new library will now appear at the Edit Symbol Libraries window.



To add symbols to the new library on the left, you can choose an existing library from the list on the right and drag symbols to this new library.

To add your own symbols, including images you have taken with a digital camera, click the **Import Graphic** button.

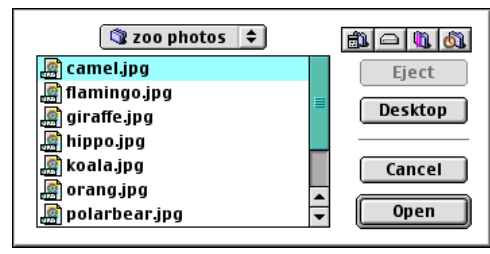




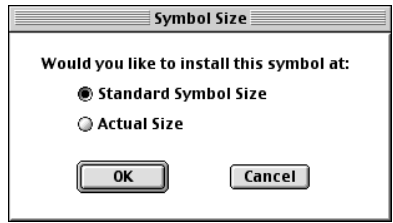
Creating and editing symbol libraries in Kidspiration

Note: You can import PICT (Mac), BMP (Windows), JPG, or GIF files as symbols.

You will see a window where you can choose the images you want to import as symbols.

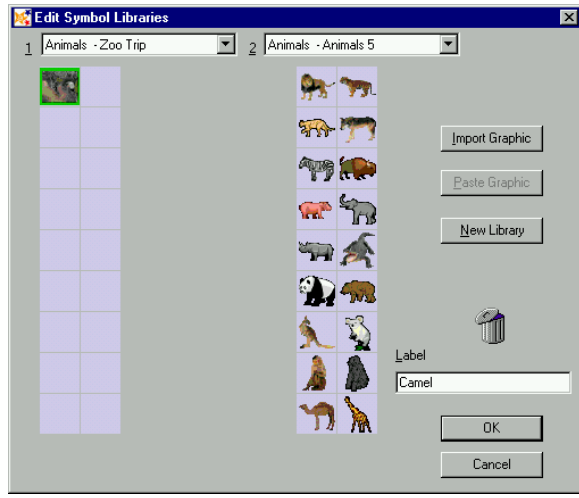


Navigate to the folder or location where you have stored your image(s). Select an image and click the **Open** button.



For best results in an Kidspiration diagram, click the Standard Symbol Size radio button and click the **OK** button.

Labeling a symbol makes it easier for new writers to make a connection between the graphic symbol and the word associated with it.



You will see the symbol you have imported in the library on the left in the Edit Symbol Libraries window.

To label this symbol, click on it once to select it and type in a name in the Label field. This label will appear as the topic or sub-topic in the Outline view and appears on the status bar in Diagram view when you hover your mouse over the symbol.

Repeat this process to add additional symbols to your new symbol library.

Click the **OK** button at the Edit Symbol Libraries window to save the changes and additions you have made.





Creating and editing symbol libraries in Kidspiration

Adding your new symbols to a diagram

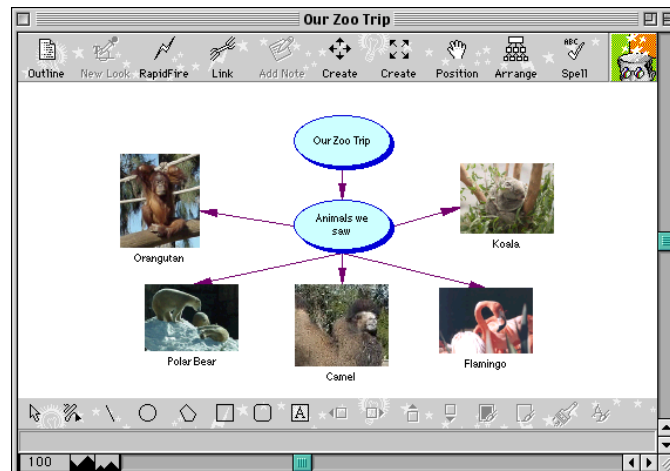
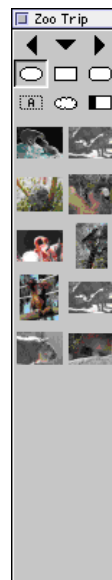
Once you have returned to your diagram, you will see your new symbol library in the Symbol Palette.

Add these symbols to your Kidspiration diagram in the same way you add symbols from the other libraries.



You might want to collect symbols from various

libraries into a custom library. This will save valuable classroom time since your students will no longer have to search through all of the libraries to find appropriate symbols.



Using custom symbol libraries

You can create a custom symbol library to make a seating chart of your class or organize students into teams for various projects. All you need to do is take images of your students, create and add them to a new symbol library and make your diagram.

Take images from field trips and collect them in one symbol library for easy access. Students can use this symbol library for pre-writing about the trip!

You can also add student-drawn artwork. If students have illustrated parts of a story, they can then diagram it out with their own artwork and the artwork of their classmates.



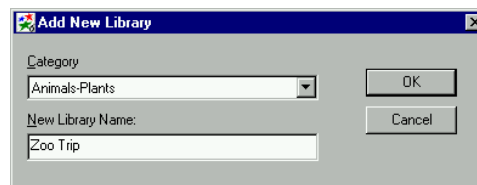


Creating and editing symbol libraries in Kidspiration

Drag and Drop

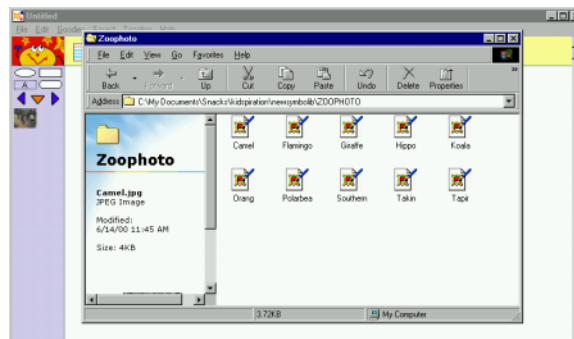
You can also create a custom symbol library using drag and drop.

To begin, go to the **Utility** menu and choose *New Symbol Library*.



Choose a category for this library and then choose a new library name. Then, click the **OK** button.

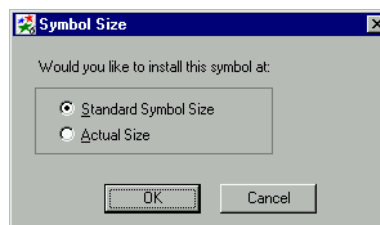
Open the folder of images you would like to add to this library. Drag the window so that you can see both the images and the symbol library.



Choosing Standard Symbol Size makes it easier to

work with the images in Kidspiration because they are the same size as other symbols rather than the actual size of the image.

Click on any image and drag it on to the Custom User 1 library.



Choose the size you would like for the symbol and click the **OK** button.

The image will appear as a symbol in this new library. Repeat the process for the rest of your images.

