


ProjectLearn



Importing a graphic into a Kidspiration diagram

SNACKS

The Snacks are based on the full-length tutorials in the Recipes4Success series.

www.tech4learning.com/recipes

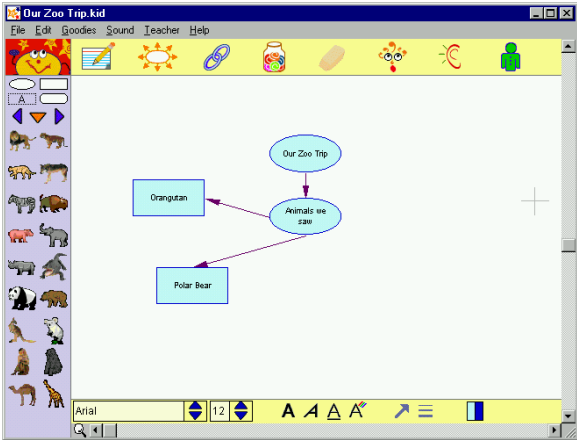
This sample is taken from the Snacks available in the Library of ProjectLearn.

www.tech4learning.com/ProjectLearn

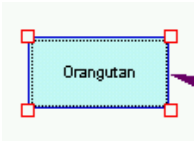
You may already know how to change the appearance of a symbol using the Symbol Libraries, but did you know that you can also add your own images?

Adding your own symbols

Open a new or existing Kidspiration document.



Click on a symbol to select it.



Go to the File menu and choose *Import a Graphic*.



Use the “Look In” pulldown menu to navigate to the image you would like to add. Click on it to select it and click the **Open** button.





Importing a graphic into a Kidspiration diagram

The symbol you selected will now display this new image.

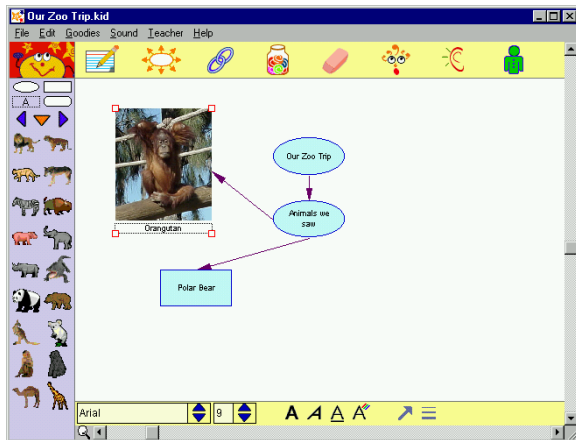


Depending on the size of the original image, the symbol may be too large or too small. Use the handles on the corner of the symbol to resize it appropriately.



A great place to find images for symbols is [Pics4 Learning: www.pics4learning.com](http://www.pics4learning.com)


To save time resizing the images in Kidspiration, download the thumbnail images instead of the full image size.



Click on any other existing symbols, go to the **File** menu and choose *Import a Graphic* to change these symbols as well.




ProjectLearn



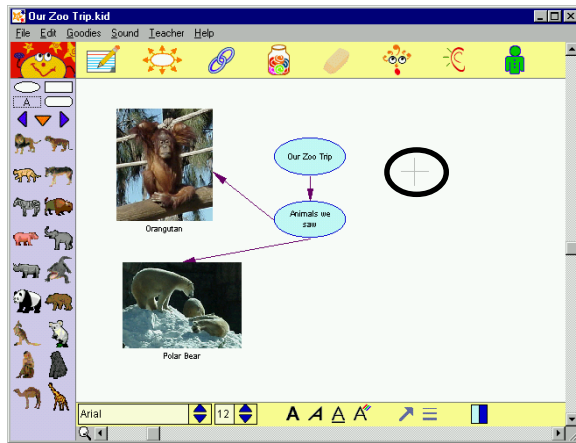
Importing a graphic into a Kidspiration diagram

SNACKS

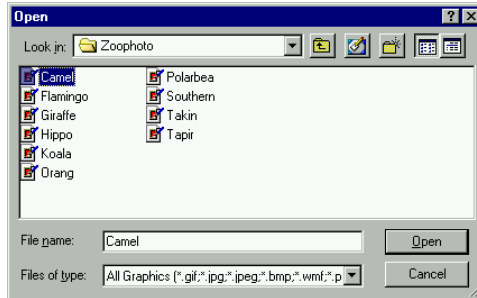
You can also create new symbols directly with this feature. Click your mouse in the location you would like for a new symbol.



You can import PICT (Mac), BMP (Windows), JPG, or GIF files as symbols.



Go to the File menu and choose *Import a Graphic*.



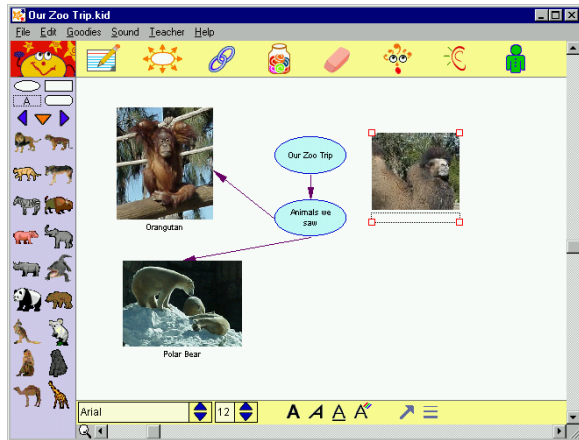
Use the “Look In” pull-down menu to navigate to the image you would like to add. Click on it to select it and click the **Open** button.



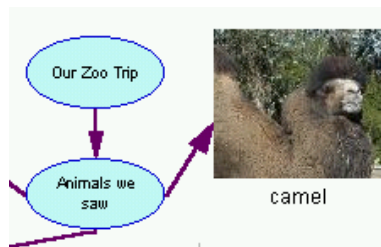


Importing a graphic into a Kidspiration diagram

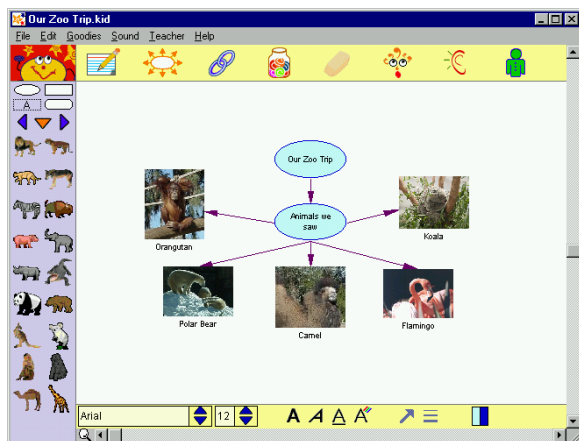
Your new symbol will appear in the diagram where you last clicked your mouse.



Use your Kidspiration skills to add a text label and create a link to this new symbol.



When you are finished, your Kidspiration diagram might look something like this!





Importing a graphic into a Kidspiration diagram

Drag and Drop

You can add symbols directly to a diagram using drag and drop.

Open the folder of images you would like to add to this library. Drag the window so that you can see both the images and the symbol library.



Click on an image and drag it on to the Kidspiration diagram where you would like it to be placed.

The image will appear as a symbol in your Kidspiration diagram.

